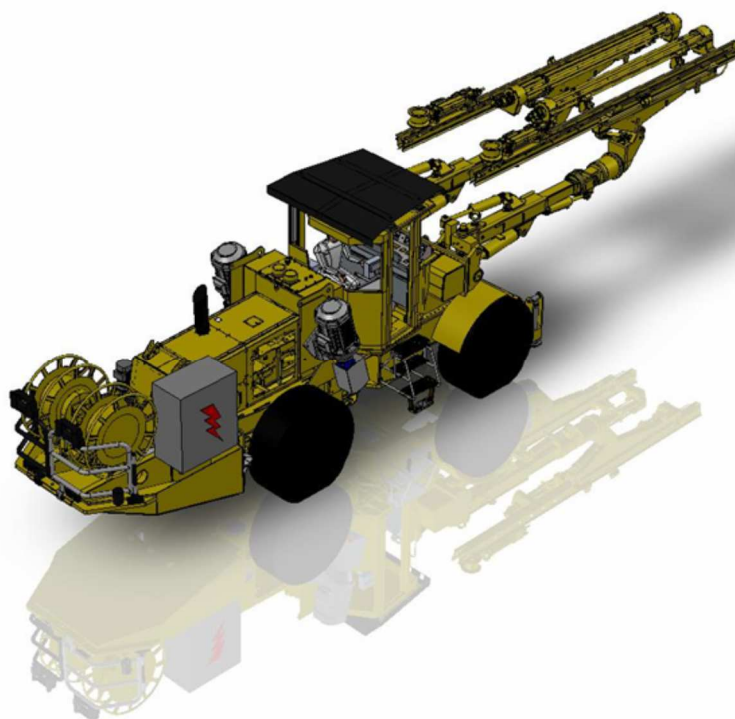


# ROBOFORE TYPE 544

---

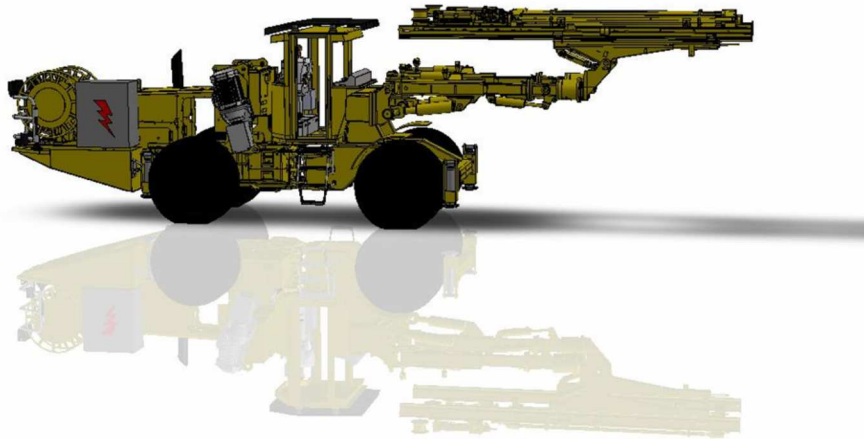


2 BOOMS BUPEC 110  
2 FEEDS ACT 14  
2 HC 108 ROCKDRILL  
1 TELESCOPIC BASKET BOOM



---



# ROBOFORE TYPE 544



## Technical Specifications

ROBODRILL			
Type	ROBOFORE 2 booms + basket		
Serial Number	544		
Dimensions	Length: 16 m	Height : mini 3.8 m	Width: 2,8 m
Weight	36 tons		
Carrier			
Type	 Cat® 525D base carrier, center articulated 40°		
Diesel Motor	 Cat® C7.1 ACERT 203HP (151kW @2300 rpm)		
Power Packs	2 x 75kW Electro-hydraulic MEPS.		
Transmission	Countershaft Powershift		
Other components	Pressurized, air conditioned FOPS lifting cabin, hydraulic controls, front & rear jacks, water pump for flushing, electric cable reel with 100m cable, water hose reel with 100m hose, fire suppression system		
Service platform			
Type	SP230 or equivalent (2 persons)		
Booms			
Type	2 x BUPEC 110		
Feeds			
Type	2 x ACT 14		
Overall length	6030 mm		
Drilling depth	3775—3895 mm		
Hydraulic drifter			
Type	MONTABERT HC 108 (36kW)		
Strike frequency	2610 to 3280 b/min		
Weight (without shank)	142 kg		

# ROBOFORE TYPE 544

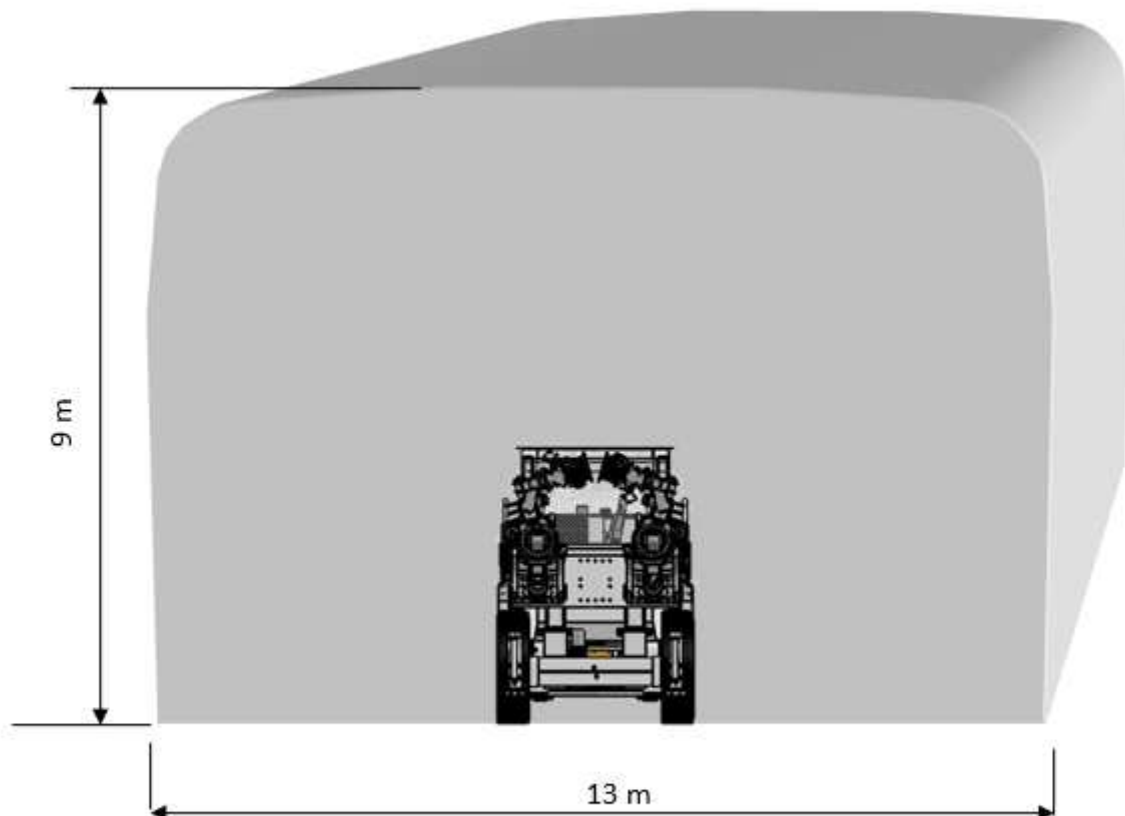
## MAIN SPECIFICATIONS

<b>Carrier</b>	Center-articulated 40°
<b>Diesel Engine</b>	Cat C7.1 ACERT, 151kW
<b>Emission standard</b>	EPA Tier 3
<b>Electric Power Units</b>	2 x 75kW MEPS
<b>Booms</b>	2 x BUPEC110
<b>Drifters</b>	2 x HC 108
<b>Face coverage h x w</b>	9 m x 13.00 m
<b>Width</b>	2.8 m
<b>Height</b>	3.78 m
<b>Length</b>	16 m
<b>Weight</b>	35 tons

## ACT FEED

<b>Pulling force (at 80 bar)</b>	1080 daN
<b>Towing force</b>	1540 daN

Type	Overall length	Rod length	Hole length	Weight
8'	4200 mm	2440 mm	2065 mm	540 kg
10'	4810 mm	3090 mm	2675 mm	565 kg
12'	5420 mm	3700 mm	3285 mm	590 kg
<b>14'</b>	<b>6030 mm</b>	<b>4270 mm</b>	<b>3895 mm</b>	<b>615 kg</b>
16'	6640 mm	4900 mm	4385 mm	640 kg



## COVERAGE AREA

# ROBOFORE TYPE 544

## AIR CIRCUIT

Compressor	CTN2
Type	Screw compressor
Power	5.5 kW
Capacity	0.73 m <sup>3</sup> / min
Max pressure	4 bar

## WATER CIRCUIT

Required water flow	50 l/min @ bar
Max. operating pressure	22 bar
Water Pump	CR10/16
Motor power	11 kW
Safety	Pressure control valve
Water hose reel	Hydraulic
Capacity	100 m - 1''1/2

## ELECTRICAL SYSTEM

Total Power	169 kW
Max. intensity	125 A at 1000 V
Voltages standards	380V - 1000 V
Safety	Phase indicator
Lighting	
Working lights	2 x 100 W 24V + 2 x 75 W 24V
Tramming lights	2 x 30 W 24V front 4 x 30 W 24V rear
Cable reel	hydraulic
Cable type	3x50mm <sup>2</sup> + grd + pilot wire
Cable reel capacity	100 m

## POWERPACK

Electric motor	2 x 250S/M-04– 3 phases
Power	2 x 75 kW MEPS
HP Pump	2 x SAUER S45
(percussion and feed)	115 cc
HP Pump	2 x SAUER S45
(rotation)	38 cc
Oil tank volume	400 L
Safety	Oil level safety
Oil cooling	2 x water cooler

# ROBOFORE TYPE 544

## BOOM

<b>Model</b>	BUPEC 110
<b>Type</b>	5 movements
<b>Parallelism holding</b>	Hydraulic
<b>Coverage area</b>	110 sqm per boom
<b>Lifting</b>	+47° / - 27°
<b>Swining</b>	+/- 40°
<b>Boom telescope</b>	1750 mm
<b>Feed anchorage</b>	2100 mm
<b>Rotation</b>	360 °

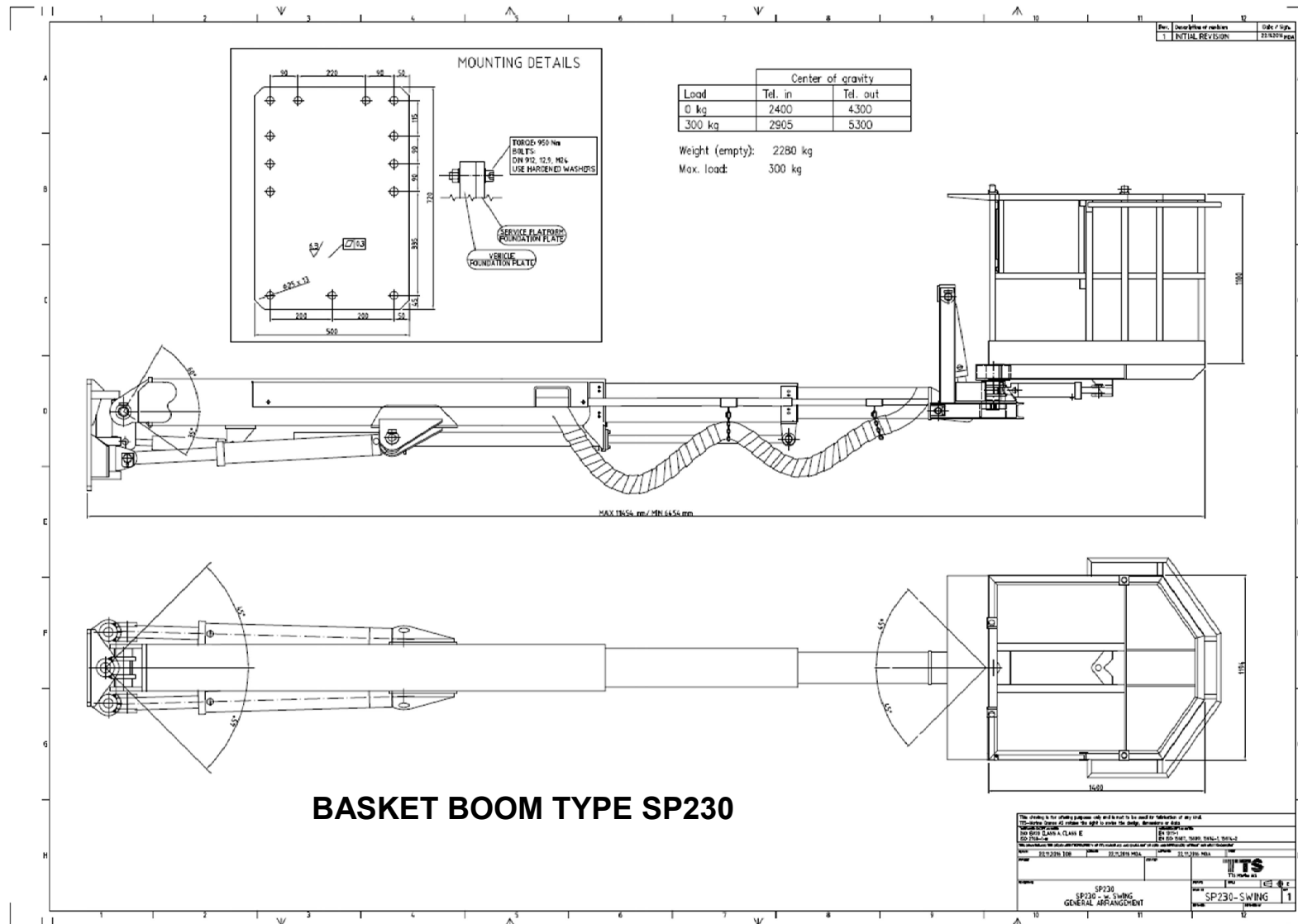
## CONTROL SYSTEM

<b>Panels</b>	Carrier / engine panel
<b>Control type</b>	Manual
<b>Drill control</b>	Hydraulic
	Anti-Jamming
	Percussion Pressure
	Thrust Power
	Automatic backward

## CARRIER

<b>Carrier</b>	Center-articulated
<b>Diesel Engine</b>	CAT C7.1 ACERT
<b>Engine Power</b>	151kW (203HP) @ 2300 rpm
<b>Emission standard</b>	EPA Tier 3 / EU Stage IIIa
<b>Transmission</b>	Countershaft Powershift
<b>Axle</b>	Caterpillar
<b>Rear oscillation</b>	15°
<b>Service Brakes</b>	Oil-immersed disc brakes
<b>Safety / Parking brake</b>	Inline Spring-Applied Hy-
<b>Steering</b>	Steering cylinder / hitch
<b>Steering angle</b>	+/-40°
<b>Tires</b>	16.00 R25
<b>Gradeability</b>	15°
<b>Tramming speed</b>	15 km/h
<b>Safety horn type</b>	broadband

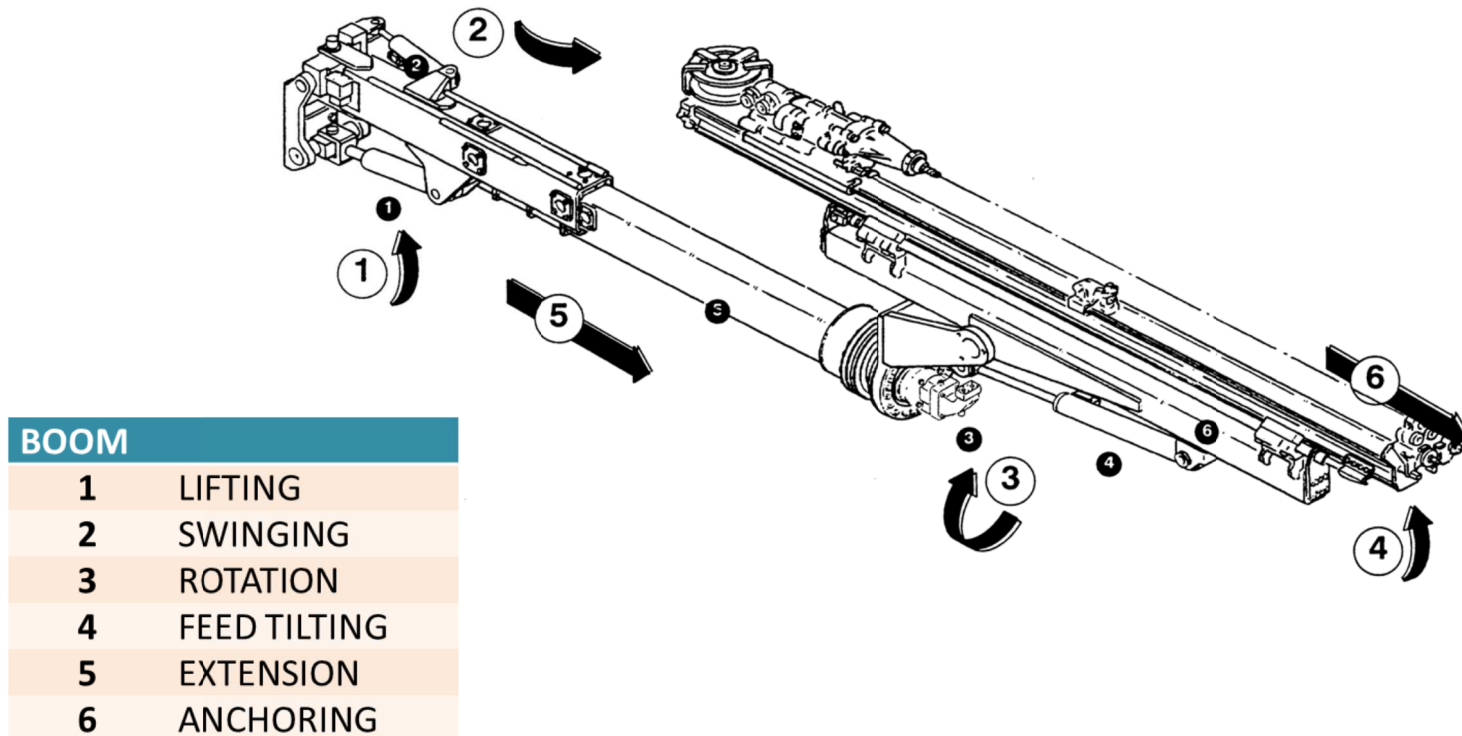
# ROBOFORE TYPE 544



# ROBOFORE TYPE 544

## BUPEC110 boom

### Boom movements



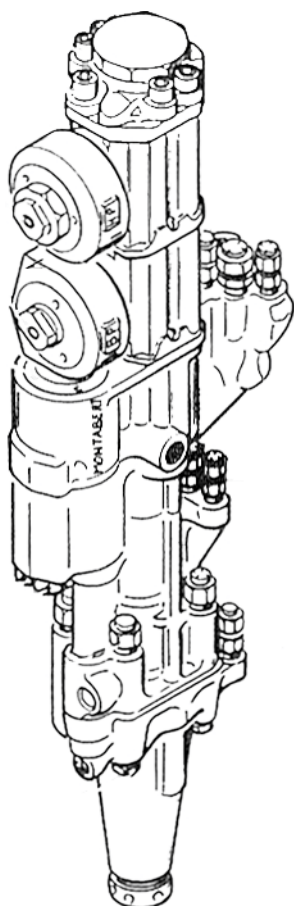
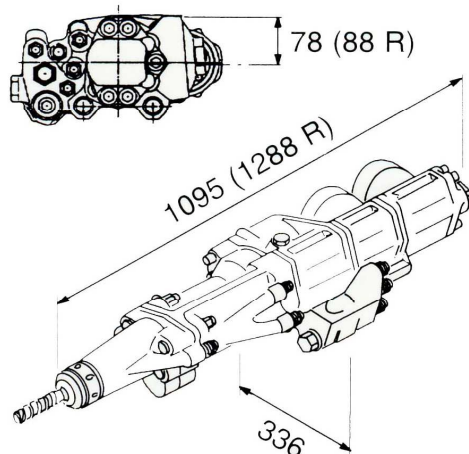
# HC 108 Hydraulic Drifter

## HC 108 - HC 108 IR

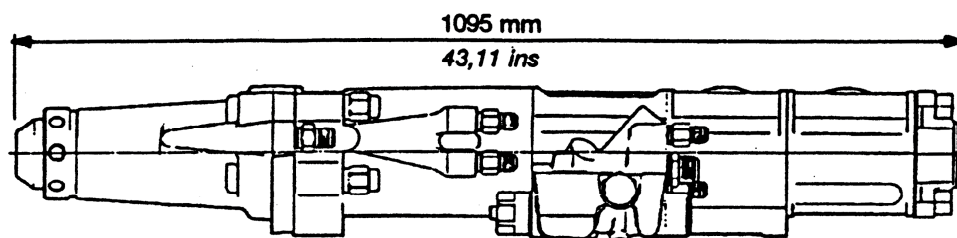
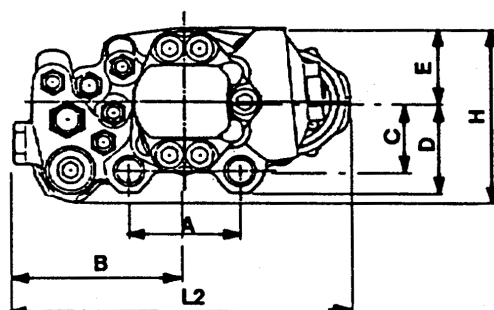
(R= Reverse percussion)

Designed for underground and surface drilling. For production drilling.

- Weight : 142 kg, 170 kg (IR)
- Input Power: 36 kW
- Blow per minute : 2610 to 3280 b/min
- Energy per blow : 205 to 510 Joules
- Max. Torque 780 Nm



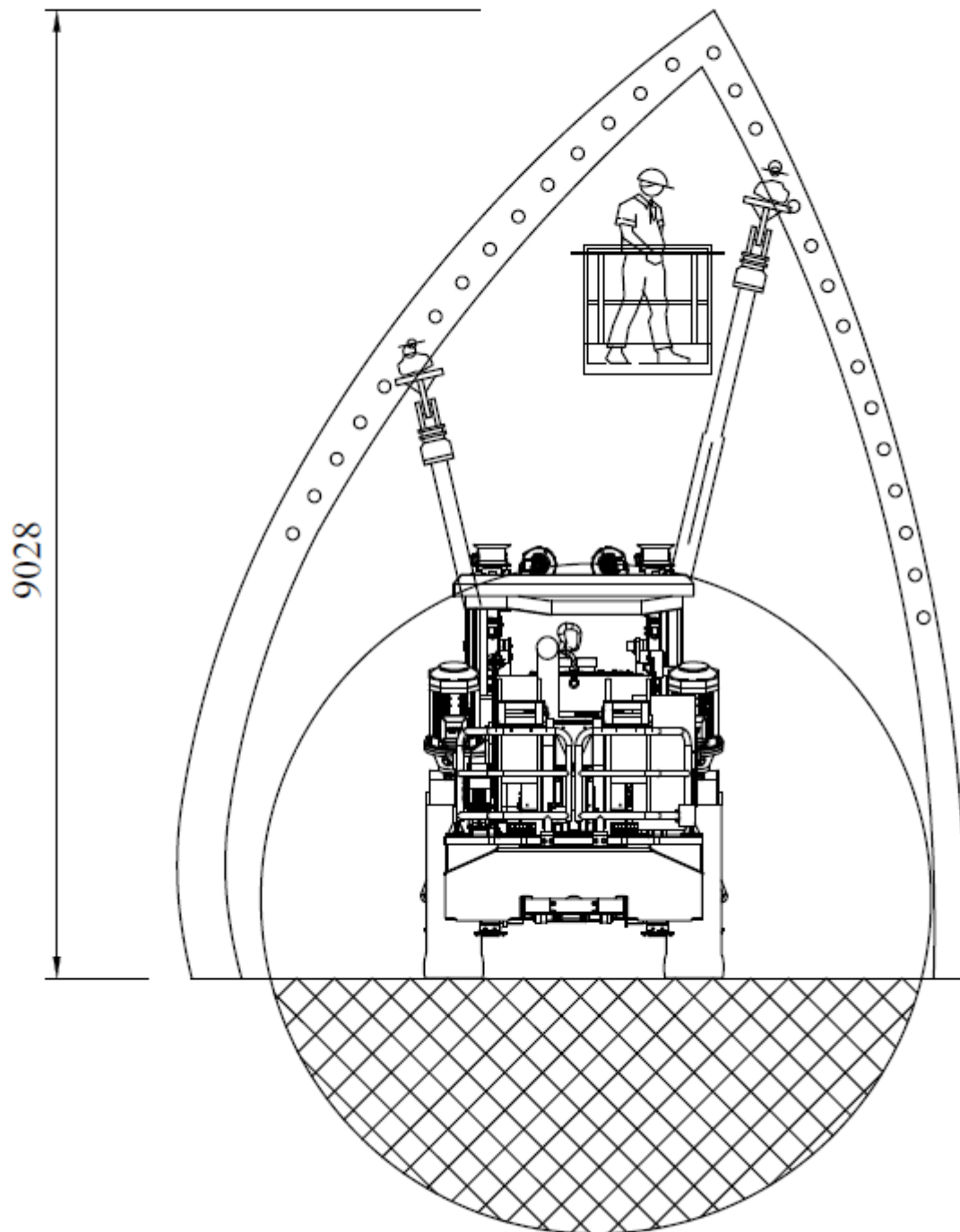
HC	80 - 120	
	mm	inch
L2	336	13,23
A	112	4,41
B	171	6,73
C	72	2,83
D	95,5	3,76
E	78	3,07
H	185	7,28



Poids (sans emmanchement) : 142 Kg      Weight (without shank) : 312,4 lbs



# ROBOFORE TYPE 544



# ROBOFORE TYPE 544

